




94 YACHT





MAKE YOUR PRESENCE FELT EFFORTLESSLY. BREAK
BOUNDARIES WITH GRACE. BE POISED. MAKE A
SOPHISTICATED STATEMENT. WHEREVER YOU ARE,
FIND TRANQUILLITY.





PRINCIPAL CHARACTERISTICS

LENGTH OVERALL
28.60M / 93' 10"

BEAM
6.56M / 21' 6"

DRAFT
2.07 M / 6' 9"

HALF LOAD DISPLACEMENT
89,278 KG / 196,824 LBS

FUEL CAPACITY
11,250 LITRES / 2,972 US GAL.

FRESH WATER CAPACITY
1,500 LITRES / 396 US GAL.

BLACK WATER CAPACITY
800 LITRES / 211 US GAL.

ACCOMMODATION
UP TO 10 GUESTS & UP TO 5 CREW

ENGINE OPTIONS
MTU UP TO 4,000 PS

MAXIMUM SPEED
UP TO 26 KNOTS

RANGE @ 10 KNOTS
UP TO 1,255 NAUTICAL MILES

DRIVES:
SHAFTS





84 YACHT

SUNSEEKER













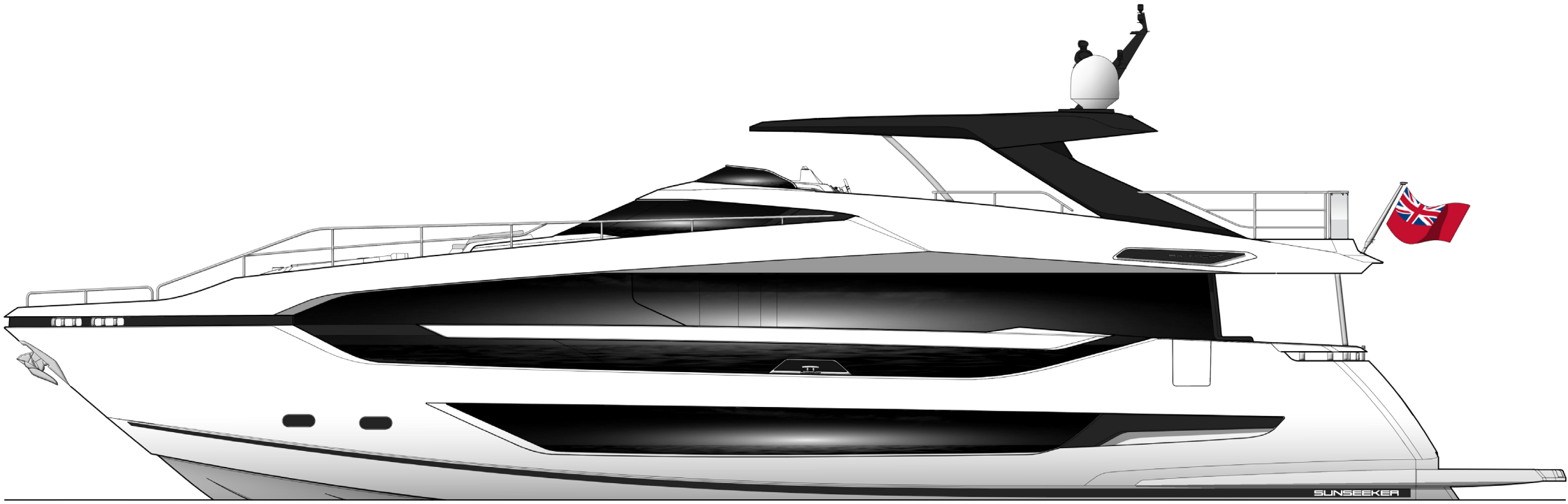


HAUTE-BOHEMIENS
SIMPLICITY



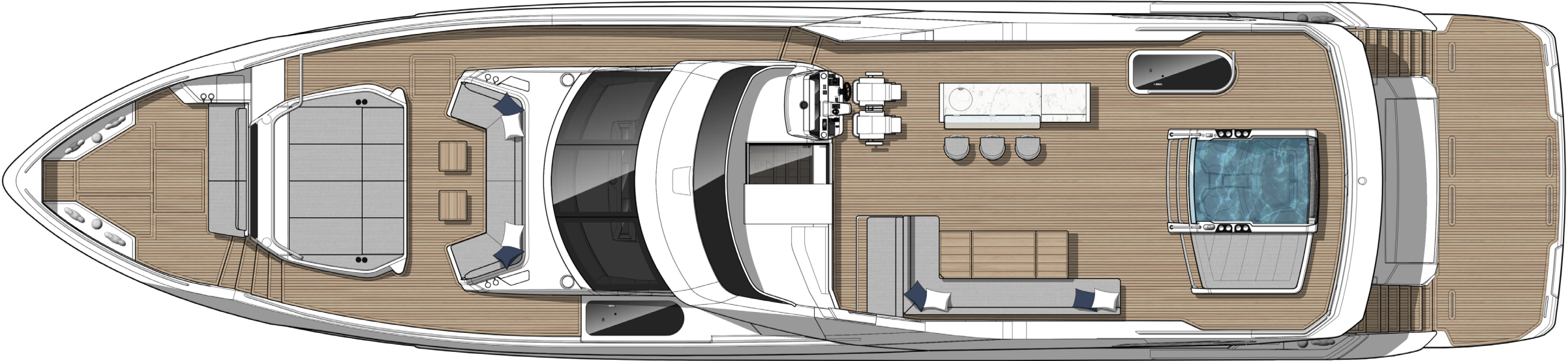


94 YACHT
GENERAL ARRANGEMENTS



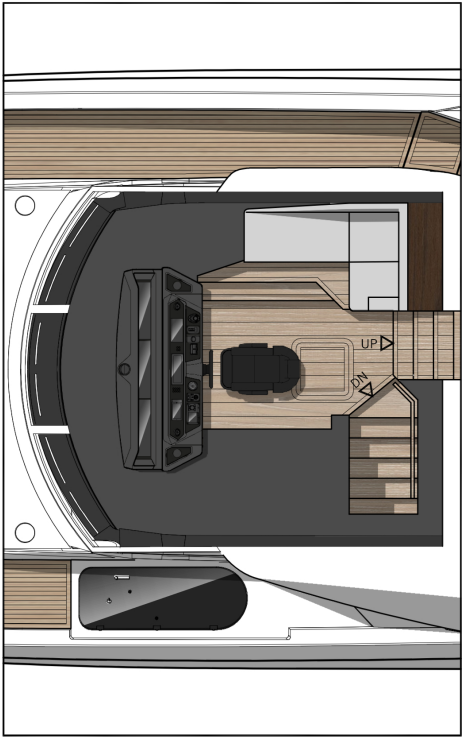
PROFIT

94 YACHT
GENERAL ARRANGEMENTS



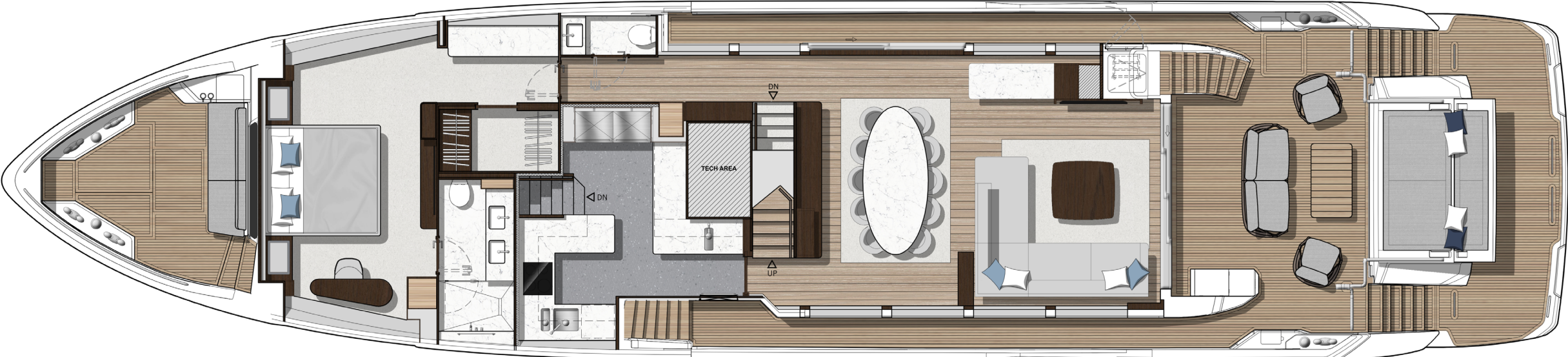
EXTERIOR PLAN

94 YACHT
GENERAL ARRANGEMENTS



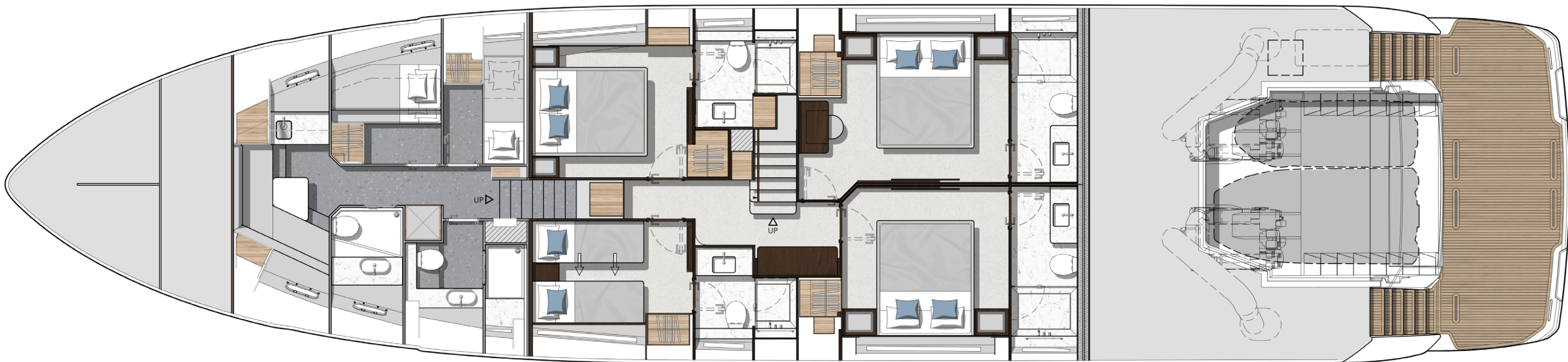
WHEELHOUSE

94 YACHT
GENERAL ARRANGEMENTS



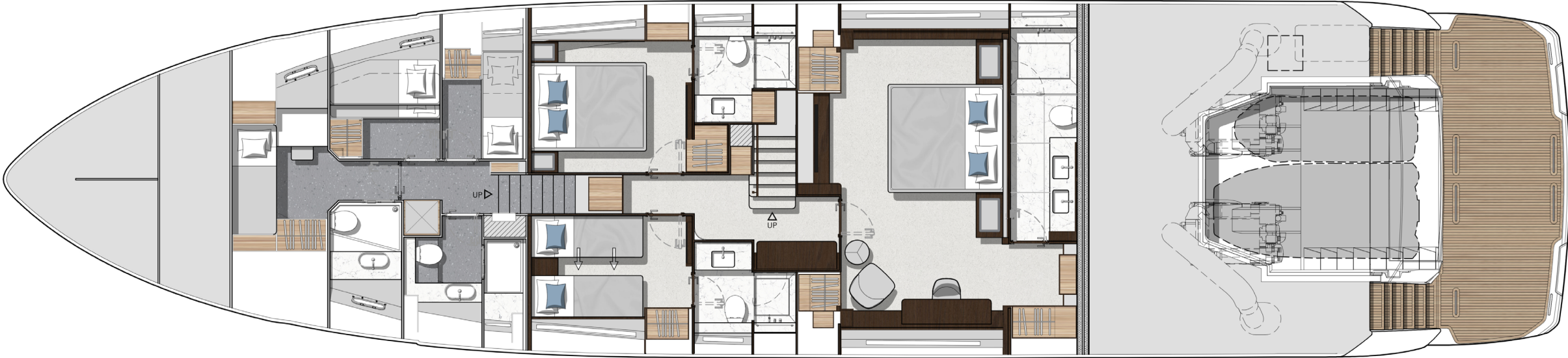
MAIN DECK

94 YACHT
GENERAL ARRANGEMENTS



LOWER DECK

94 YACHT
GENERAL ARRANGEMENTS



LOWER DECK OPTION



Whilst every effort has been made to provide accurate information, the content of this e-brochure is not intended to be, and should not be relied upon as providing, any warranty, representation, guarantee, or offer. Performance and range figures are estimates to be used as an indicative guide only and are not guaranteed. Dirt or marine growth on the hull, size of boat, engine choice and tuning, propeller condition and pitch, air and water temperature, fuel weight and quality, water weight, stores, number of people on board and other factors can each affect a boat's performance and range. The photographs and artist's impressions in this e-brochure are from existing models in the Sunseeker range. There may be items shown in these photographs and impressions that are not included in the standard inventory of the models shown. Specifications, measurements and certain other details contained in this e-brochure may relate to models only for sale in a particular territory. We cannot guarantee that the entire Sunseeker range will be available in every territory. Specifications for models sold in different territories may also vary. Specifications may be changed or models withdrawn at any time without prior notice. The individual specification for each vessel will be agreed as part of the order process and confirmed in the sales contract between the purchaser and the approved Sunseeker distributor or dealer in the relevant territory. Please contact the local Sunseeker distributor or dealer in the territory which is of interest to you, to enquire as to the models and options that are likely to be available in that territory. This e-brochure is created and published in the United Kingdom by or on behalf of Sunseeker International Ltd and subject to the limitations and exclusions set out herein provides information relating to new Sunseeker™ manufactured motor yachts sold outside of the United States of America and Canada. For parties requiring information on new Sunseeker models for sale in the United States or Canada please contact a Sunseeker USA Sales Co. Inc. appointed dealer in the relevant territory. All distributors and dealers of new Sunseeker manufactured motor yachts are independently owned and controlled businesses. They are not subsidiaries of, or agents for, Sunseeker International Limited, Sunseeker USA Sales Co. Inc. or any of their respective parent, subsidiary or affiliated companies. As such, no distributor or dealer has any authority to bind or obligate any Sunseeker company in any way unless first agreed in writing signed by an authorized Sunseeker signatory.

Information about how we use personal data is set out in our Privacy Policy at <https://www.sunseeker.com/legal>